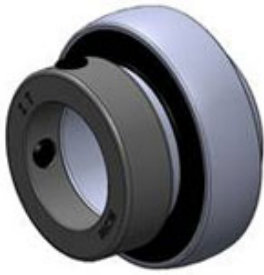


HC200 系列



轴承型号	轴径 d		尺寸 (mm/in.)											额定动荷载 (N)	额定静荷载 (N)	重量 (kg)
	in	mm	D	L	Bi	Be	n	m	T	w	k	G	ds			
HC201-8	1/2		47	43.7	34.2	17	17.1	17.1	3.7	33.3	13.5	5	1/4-28 M6X0.75	1000	630	0.27
202-9	9/16		47	43.7	34.2	17	17.1	17.1	3.7	33.3	13.5	5	1/4-28 M6X0.75	1000	630	0.26
202-10	5/8		47	43.7	34.2	17	17.1	17.1	3.7	33.3	13.5	5	1/4-28 M6X0.75	1000	630	0.24
203-11	11/16		47	43.7	34.2	17	17.1	17.1	3.7	33.3	13.5	5	1/4-28 M6X0.75	1000	630	0.23
204-12	3/4		47	43.7	34.2	17	17.1	17.1	3.7	33.3	13.5	5	1/4-28 M6X0.75	1000	630	0.26
HC201		12	47	43.7	34.2	17	17.1	17.1	3.7	33.3	13.5	5	1/4-28 M6X0.75	1000	630	0.27
202		15	47	43.7	34.2	17	17.1	17.1	3.7	33.3	13.5	5	1/4-28 M6X0.75	1000	630	0.24
203		17	47	43.7	34.2	17	17.1	17.1	3.7	33.3	13.5	5	1/4-28 M6X0.75	1000	630	0.23
204		20	47	43.7	34.2	17	17.1	17.1	3.7	33.3	13.5	5	1/4-28 M6X0.75	1000	630	0.21
HC205-13	13/16		52	44.4	34.9	17	17.5	17.4	3.9	38.1	13.5	5	1/4-28 M6X0.75	1100	710	0.31
205-14	7/8		52	44.4	34.9	17	17.5	17.4	3.9	38.1	13.5	5	1/4-28 M6X0.75	1100	710	0.29
205-15	15/16		52	44.4	34.9	17	17.5	17.4	3.9	38.1	13.5	5	1/4-28 M6X0.75	1100	710	0.27
205-16	1		52	44.4	34.9	17	17.5	17.4	3.9	38.1	13.5	5	1/4-28 M6X0.75	1100	710	0.25
HC205		25	52	44.4	34.9	17	17.5	17.4	3.9	38.1	13.5	5	1/4-28 M6X0.75	1100	710	0.25

HC200 系列

HC206-17	1-1/16		62	484	36.5	19	183	182	5	44.5	15.9	6	5/16-24 M8X 1	1540	1020	0.4
206-18	1-1/8		62	484	36.5	19	183	182	5	44.5	15.9	6	5/16-24 M8X 1	1540	1020	0.38
206-19	1-3/16		62	484	36.5	19	183	182	5	44.5	15.9	6	5/16-24 M8X 1	1540	1020	0.35
206-20	1-1/4		62	484	36.5	19	183	182	5	44.5	15.9	6	5/16-24 M8X 1	1540	1020	0.32
HC206		30	62	484	36.5	19	183	182	5	44.5	15.9	6	5/16-24 M8X 1	1540	1020	0.36
HC207-20	1-1/4		72	51.1	37.6	20	188	188	5.7	55.6	17.5	6.5	5/16 24 M8X 1	2030	1400	0.65
207-21	1-5/16		72	51.1	37.6	20	188	188	5.7	55.6	17.5	6.5	5/16 24 M8X 1	2030	1400	0.62
207-22	1-3/8		72	51.1	37.6	20	188	188	5.7	55.6	17.5	6.5	5/16 24 M8X 1	2030	1400	0.59
207-23	1-7/16		72	51.1	37.6	20	188	188	5.7	55.6	17.5	6.5	5/16 24 M8X 1	2030	1400	0.55
HC207		35	72	51.1	37.6	20	188	188	5.7	55.6	17.5	6.5	5/16 24 M8X 1	2030	1400	0.59
HC208-24	1-1/2		80	56.3	42.8	21	21.4	21.4	6.2	60.3	18.3	6.5	5/16-24 M8 X 1	2300	1600	0.74
208-25	1-9/16		80	56.3	42.8	21	21.4	21.4	6.2	60.3	18.3	6.5	5/16-24 M8 X 1	2300	1600	0.75
HC208		40	80	56.3	42.8	21	21.4	21.4	6.2	60.3	18.3	6.5	5/16-24 M8 X 1	2300	1600	0.74
HC209-26	1-5/8		85	56.3	42.8	22	21.4	21.4	6.4	63.5	18.3	6.5	5/16 24 M8X 1	2560	1810	0.93
209-27	1-11/16		85	56.3	42.8	22	21.4	21.4	6.4	63.5	18.3	6.5	5/16 24 M8X 1	2560	1810	0.88
209-28	1-3/4		85	56.3	42.8	22	21.4	21.4	6.4	63.5	18.3	6.5	5/16 24 M8X 1	2560	1810	0.84
HC209		45	85	56.3	42.8	22	21.4	21.4	6.4	63.5	18.3	6.5	5/16 24 M8X 1	2560	1810	0.82
HC210-29	1-13/16		90	62.7	49.2	24	24.6	246	6.5	69.9	18.3	6.5	5/16-24 M8X 1	2750	2020	1.22
210-30	1-7/8		90	62.7	49.2	24	24.6	246	6.5	69.9	18.3	6.5	5/16-24 M8X 1	2750	2020	1.17
210-31	1-15/16		90	62.7	49.2	24	24.6	246	6.5	69.9	18.3	6.5	5/16-24 M8X 1	2750	2020	1.11
210-32	2		90	62.7	49.2	24	24.6	246	6.5	69.9	18.3	6.5	5/16-24 M8X 1	2750	2020	1.05
HC210		50	90	62.7	49.2	24	24.6	246	6.5	69.9	18.3	6.5	5/16-24 M8X 1	2750	2020	1.08
HC211-32	2		100	71.4	55.5	25	27.8	27.7	7	76.2	20. 7	8	3/8-24 M10X 1.25	3400	2550	1.59

HC200 系列

211-33	2-1/16		100	71.4	55.5	25	27.8	27.7	7	76.2	20. 7	8	3/8-24 M10X 1.25	3400	2550	1.52
211-34	2-1/8		100	71.4	55.5	25	27.8	27.7	7	76.2	20. 7	8	3/8-24 M10X 1.25	3400	2550	1.45
211-35	2-3/16		100	71.4	55.5	25	27.8	27.7	7	76.2	20. 7	8	3/8-24 M10X 1.25	3400	2550	1.37
HC211		55	100	71.4	55.5	25	27.8	27.7	7	76.2	20. 7	8	3/8-24 M10X 1.25	3400	2550	1.4
HC212-36	2-1/4		110	77.8	61.9	24	31	309	7.6	84.2	223	8	3/8-24 M10 X1.25	4100	3150	1.95
212-37	2-5/16		110	77.8	61.9	24	31	309	7.6	84.2	223	8	3/8-24 M10 X1.25	4100	3150	1.86
212-38	2-3/8		110	77.8	61.9	24	31	309	7.6	84.2	223	8	3/8-24 M10 X1.25	4100	3150	1.77
212-39	2-7/16		110	77.8	61.9	24	31	309	7.6	84.2	223	8	3/8-24 M10 X1.25	4100	3150	1.68
HC212		60	110	77.8	61.9	24	31	309	7.6	84.2	223	8	3/8-24 M10 X1.25	4100	3150	1.7
HC213-40	2-1/2		120	85.7	68.2	28	34.1	34.1	8.9	86	23.5	8.5	3/8-24 M10X 1.25	4480	3470	2.14
213-41	2-9/16		120	85.7	68.2	28	34.1	34.1	8.9	86	23.5	8.5	3/8-24 M10X 1.25	4480	3470	2.04
HC213		65	120	85.7	68.2	28	34.1	34.1	8.9	86	23.5	8.5	3/8-24 M10X 1.25	4480	3470	2.05
HC214-42	2-5/8		125	85.7	68.2	30	34.1	341	8.9	90	23.5	8.5	3/8-24 M10X 1.25	4870	3810	2.38
214-43	2-11/16		125	85.7	68.2	30	34.1	341	8.9	90	23.5	8.5	3/8-24 M10X 1.25	4870	3810	2.72
214-44	2-3/4		125	85.7	68.2	30	34.1	341	8.9	90	23.5	8.5	3/8-24 M10X 1.25	4870	3810	2.15
HC214		70	125	85.7	68.2	30	34.1	341	8.9	90	23.5	8.5	3/8-24 M10X 1.25	4870	3810	2.14
HC215-45	2-13/16		130	92.1	74.6	32	37.3	37.3	8.9	102	33. b	8 b	3/8-24 M10X 1.25	5700	4200	2.83
215-46	2-7/8		130	92.1	74.6	32	37.3	37.3	8.9	102	33. b	8 b	3/8-24 M10X 1.25	5700	4200	2.7

HC200 系列

215-47	2-15/16		130	92.1	74.6	32	37.3	37.3	8.9	102	3/8 b	8 b	3/8-24 M10X 1.25	5700	4200	2.56	
215-48	3		130	92.1	74.6	32	37.3	37.3	8.9	102	3/8 b	8 b	3/8-24 M10X 1.25	5700	4200	2.43	
HC215		75	130	92.1	74.6	32	37.3	37.3	8.9	102	3/8 b	8 b	3/8-24 M10X 1.25	5700	4200	2.53	