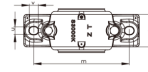
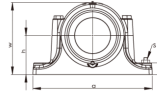
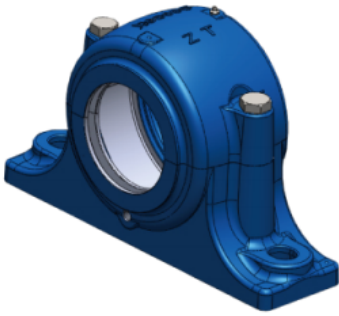


# S3000K Series



Housing No.	Shaft dia	Dimensions															Housing Wt(kg)	Bearing No.	Adapter Sleeve	Locating Ring		
		D	a	b	c	g	h	L	W	m	s	u	V	d <sub>2</sub>	d <sub>3</sub>	f <sub>1</sub>				f <sub>2</sub>	Number	QTY
S3024K	110	180	390	110	40	56	112	150	215	320	M24	30	36	113	135	8	10.7	16.5	23024K	H3024	SR180/10	1
S3026K	115	200	420	120	45	62	125	160	239	350	M24	30	36	118	140	8	10.7	19.3	23026K	H3026	SR200/10	1
S3028K	125	210	420	120	45	63	140	170	259	350	M24	30	36	128	154	9	12.2	24.6	23028K	H3028	SR210/10	1
S3030K	135	225	460	130	45	66	150	175	278	380	M24	30	36	138	164	9	12.2	29	23030K	H3030	SR225/10	1
S3032K	140	240	470	130	50	70	150	190	288	390	M24	30	36	143	173	10	13.7	37	23032K	H3032	SR240/10	1
S3034K	150	260	540	160	55	77	160	200	320	450	M30	36	48	153	183	10	13.7	45	23 034K	H3034	SR260/10	1
S3036K	160	280	560	160	55	84	170	210	340	470	M30	36	48	163	193	10	13.7	65	2 3 036K	H3036	SR280/10	1
S3038K	170	290	560	160	55	85	170	210	353	470	M30	36	48	173	203	10	13.7	67	2 3 038K	H3038	SR290/10	1
S3040K	180	310	615	170	60	92	180	235	373	515	M30	36	48	183	213	10	13.7	72	23040K	H3040	SR310/10	1
S3044K	200	340	690	190	70	100	200	255	408	580	M36	42	50	203	240	11	15.5	98	23044K	H3044	SR340/10	1
S3048K	220	360	720	200	75	102	210	265	433	610	M36	42	50	223	260	11	15.5	110	23048K	H3048	SR360/10	1
S3052K	240	400	820	220	80	114	240	285	485	680	M45	52	70	243	286	12	17.3	148	2 3 052K	H3052	SR400/10	1
S3056K	260	420	860	230	80	116	250	295	505	720	M45	52	70	263	306	12	17.3	165	23 056K	H3056	SR420/10	1