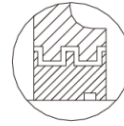
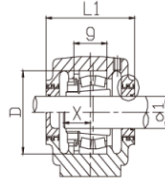
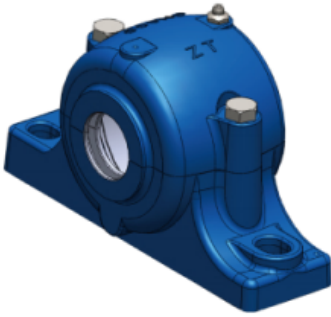


SN600 Series



Housing No.	Shaft dia	Dimensions																	Housing Wt(kg)	Bearing NO.		Adapter Sleeve		Locating Ring		
		D	a	b	c	g	h	L	L1	W	n	m	s	u	V	d ₂	d ₃	f ₁		f ₂	mm	In.	mm	In.	Number	QTY
SN605	20	62	185	52	22	34	50	80	83	90	25	150	M12	15	20	21.5	31	3	4.2	1.4	1305K	-	H305	HE305	SR62x8.5	2
SN605	20	62	185	52	22	34	50	80	83	90	25	150	M12	15	20	21.5	31	3	4.2	1.4	2305K		H2305	HE2305	SR62x10	1
SN606	25	72	185	52	22	37	50	82	85	95	25	150	M12	15	20	26.5	38	4	5.4	2.15	1306K		H306	HE306	SR72x9	2
SN606	25	72	185	52	22	37	50	82	85	95	25	150	M12	15	20	26.5	38	4	5.4	2.15	2306K		H2306	HE2306	SR72x10	1
SN607	30	80	205	60	25	41	60	90	93	110	30	170	M12	15	20	31.5	43	4	5.4	2.35	1307K		H307	HE307	SR80x10	2
SN607	30	80	205	60	25	41	60	90	93	110	30	170	M12	15	20	31.5	43	4	5.4	2.35	2307K		H2307	HE2307	SR80x10	1
SN608	35	90	205	60	25	43	60	95	100	115	30	170	M12	15	20	36.5	48	4	5.4	3.2	1308K	21308K	H308	HE308	SR90x10	2
SN608	35	90	205	60	25	43	60	95	100	115	30	170	M12	15	20	36.5	48	4	5.4	3.2	2308K	22308K	H2308	HE2308	SR90x10	1
(S)SN609	40	100	255	70	28	46	70	105	110	130	35	210	M16	18	23	41.5	53	4	5.4	3(4.4)	1309K	21309K	H309	HE309	SR100x10.5	2
(S)SN609	40	100	255	70	28	46	70	105	110	130	35	210	M16	18	23	41.5	53	4	5.4	3(4.4)	2309K	22309K	H2309	HE2309	SR100x8	1
(S)SN610	45	110	255	70	30	50	70	115	120	135	35	210	M16	18	23	46.5	58	4	5.4	3.75(5)	1310K	21310K	H310	HE310	SR110x11.5	2
(S)SN610	45	110	255	70	30	50	70	115	120	135	35	210	M16	18	23	46.5	58	4	5.4	3.75(5)	2310K	22310K	H2310	HE2310	SR110x10	1
(S)SN611	50	120	275	80	30	53	80	120	125	150	40	230	M16	18	23	51.5	67	5	6.9	5.3(7.15)	1311K	21311K	H311	HE311	SR120x12	2
(S)SN611	50	120	275	80	30	53	80	120	125	150	40	230	M16	18	23	51.5	67	5	6.9	5.3(7.15)	2311K	22311K	H2311	HE2311	SR120x110	1
(S)SN612	55	130	280	80	30	56	80	125	130	155	40	230	M16	18	23	56.5	72	5	6.9	6.3(7.95)	1312K	21312K	H312	HE312	SR130x12.5	2
(S)SN612	55	130	280	80	30	56	80	125	130	155	40	230	M16	18	23	56.5	72	5	6.9	6.3(7.95)	2312K	22312K	H2312	HE2312	SR130x10	1
(S)SN613	60	140	315	90	32	58	95	130	135	175	50	260	M20	22	27	62	77	5	6.8	6.8(9.9)	1313K	21313K	H313	HE313	SR140x12.5	2
(S)SN613	60	140	315	90	32	58	95	130	135	175	50	260	M20	22	27	62	77	5	6.8	6.8(9.9)	2313K	22313K	H2313	HE2313	SR140x10	1
(S)SN615	65	160	345	100	35	65	100	140	145	195	50	290	M20	22	27	67	82	5	6.8	7.4(9.3)	1315K	21315K	H315	HE315	SR160x14	2
(S)SN615	65	160	345	100	35	65	100	140	145	195	50	290	M20	22	27	67	82	5	6.8	7.4(9.3)	2315K	22315K	H2315	HE2315	SR160x10	1
(S)SN616	70	170	345	100	35	68	112	145	150	212	50	290	M20	22	27	72	89	6	8.1	11.4(14.5)	1316K	21316K	H316	HE316	SR170x14.5	2
(S)SN616	70	170	345	100	35	68	112	145	150	212	50	290	M20	22	27	72	89	6	8.1	11.4(14.5)	2316K	22316K	H2316	HE2316	SR170x10	1
(S)SN617	75	180	380	110	40	70	112	155	160	218	60	320	M24	26	32	77	94	6	8.1	11.1(15.5)	1317K	21317K	H317	HE317	SR180x14.5	2
(S)SN617	75	180	380	110	40	70	112	155	160	218	60	320	M24	26	32	77	94	6	8.1	11.1(15.5)	2317K	22317K	H2317	HE2317	SR180x10	1
(S)SN618	80	190	400	110	33	74	112	160	165	230	60	320	M24	26	35	82	99	6	8.1	17(20.2)	1318K	22318K	H318	HE318	SR190x15.5	2
(S)SN618	80	190	400	110	33	74	112	160	165	230	60	320	M24	26	35	82	99	6	8.1	17(20.2)	2318K	22318K	H2318	HE2318	SR190x10	1
(S)SN619	85	200	420	120	36	77	125	170	175	245	70	350	M24	26	35	87	104	6	8.1	15.5	1319K	22319K	H319	HE319	SR200x16	2
(S)SN619	85	200	420	120	36	77	125	170	175	245	70	350	M24	26	35	87	104	6	8.1	15.5	2319K	22319K	H2319	HE2319	SR200x10	1
(S)SN620	90	215	420	120	38	83	140	175	180	280	70	350	M24	26	35	92	111	7	9.3	23(27.5)	2320K	22320K	H320	HE320	SR215x18	2
(S)SN620	90	215	420	120	38	83	140	175	180	280	70	350	M24	26	35	92	111	7	9.3	23(27.5)	2320K	22320K	H2320	HE2320	SR215x10	1
(S)SN622	100	240	460	130	40	90	150	190	195	300	70	390	M24	28	38	102	125	8	10.8	29(35)	2322K	22322K	H322	HE322	SR240x20	2
(S)SN622	100	240	460	130	40	90	150	190	195	300	70	390	M24	28	38	102	125	8	10.8	29(35)	2322K	22322K	H2322	HE2322	SR240x10	1
(S)SN624	110	260	540	160	50	96	160	205	210	325	90	450	M30	33	42	113	135	8	10.7	33.6(43.8)		22324K	H2324	HE2324	SR260x10	1
(S)SN626	115	280	560	160	50	103	170	215	220	350	90	470	M30	33	42	118	140	8	10.7	41(50.4)		22326K	H2326	HE2326	SR280x10	1
(S)SN628	125	300	630	170	55	112	180	235	240	375	90	520	M30	35	45	128	154	9	12.2	49(62)		22328K	H2328	HE2328	SR300x10	1
(S)SN630	135	320	680	180	55	118	190	245	250	395	90	560	M30	35	45	138	164	9	12.2	60(75)		22330K	H2330	HE2330	SR320x10	1
(S)SN632	140	340	710	190	60	124	200	255	260	415	100	580	M36	42	52	143	173	10	13.7	68.8(87)		22332K	H2332	HE2332	SR340x10	1